

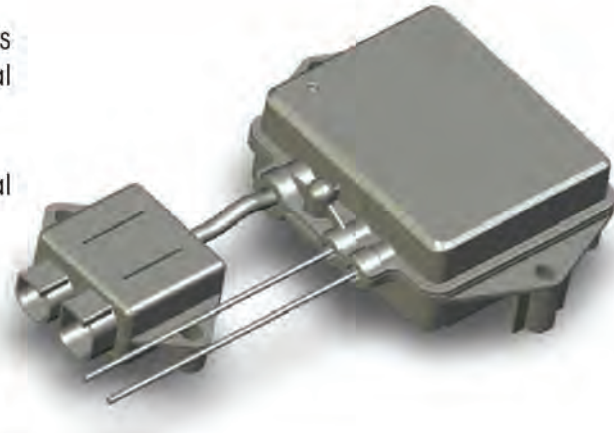


DG200

The DG200, combined with the Novacom platform, provides for monitoring and managing your mobile equipment in real time.

The DG200 is a compact, innovative telematics terminal designed for monitoring trailers.

A subsidiary of CLS (Collecte Localisation Satellites) and an Argos and Telespazio operator, Novacom Services assists its customers with implementing customized remote industrial equipment, mobile vehicle, and merchandise management solutions.



TELEMATICS SOLUTION

Positioning:

- Scheduled position transmission or by movement detection
- European and North African coverage

Technical data:

- GPRS communications
- Wireless sensors
- CAN Bus interface: EBS and TPMS (LDL)
- Thermo King and Carrier reefer equipment interface
- Over the air (OTA) programming
- Average battery autonomy: 2 months
- IP 69K resistant packaging for integration in the most comprehensive architectures.

ADVANTAGES

- Pan-European Coverage
- Quick installation and immediate activation
- Technical diagnostics using the CAN Bus connection
- Access to setpoint temperatures, reefer unit operating hours, troubleshooting codes, etc.
- Over the air (OTA) GPS terminal maintenance
- 24-hours-a-day service continuity
- Secure web app providing all fleet management functions: maps, reports, archiving
- Technical support available

A Novacom Services Solution



www.novacom-services.com



TECHNICAL CHARACTERISTICS

Physical Characteristics <ul style="list-style-type: none">• Dimensions: 150 x 110 x 50 mm• Weight: 710 g	Wireless Sensors <p>Several existing sensors:</p> <ul style="list-style-type: none">• Door sensor• Temperature sensor• Tire pressure sensor• Secure electronic code lock sensor <p>Sensors may be battery operated or with an external power supply.</p>
Environment <ul style="list-style-type: none">• Operating Temperature: -40°C to +85°C• IP69K protection index	Communications <ul style="list-style-type: none">• 4-band GPRS/GSM modem• Internal antenna• 2 ways communications channels• OTA software updates and configuration
Power Supply <ul style="list-style-type: none">• Power supply connected to the EBS, lights, and/or reefer unit• Supported external power supply voltage: 9-32 V• Rechargeable lithium battery operational between -50°C and +60°C, when charging down to -20°C• Battery autonomy: 2 months; service life: 6 years	Récepteur GPS <ul style="list-style-type: none">• 12-channel receiver• Internal antenna
Primary interface <ul style="list-style-type: none">• CAN Bus	

OPERATING PROCEDURE

• External Power Supply Mode:

Scheduled information transmission (5 or 15 min.) or on-event (door open, alarm, TPMS, etc.)

• Battery Mode:

A stationary trailer is automatically monitored every 6 hours then on a 12-hour and 24-hour cycle. Events are submitted immediately

• Battery + Movement Mode:

If the trailer moves, the event is submitted immediately followed by transmissions every hour

APPLICATIONS

• Trailer Monitoring with EBS Data

- Hook/unhook, EBS use, (over)loads, mileage, etc.

• Refrigerated Trailer Monitoring

- Temperature, setpoint temperature, operating hours, battery and fuel levels, troubleshooting codes, door status, etc.
- Preventive maintenance, temperature monitoring, mileage/fuel/use rate optimization, etc.

• Trailer Security

- Various door closure sensors, physical closure, and electronic code seal.
- Trailer monitoring, alarms triggered on the Novacom platform if doors are opened outside loading/unloading zones, etc.

• Tire Pressure Monitoring System

- Providing the pressure of each wheel of the trailer, anticipate maintenance operations, prevent potential accidents and get better manage of the fleet

Don't hesitate to contact us for more information.

www.novacom-services.com